

## MISSION STATEMENT

The Residency in Primary Eye Care seeks to attract the best-qualified optometric graduates and provide advanced clinical and didactic education in optometry. The program offers a variety of optometric and interdisciplinary care and is designed to foster a life-long commitment to learning. Graduates of this residency program are trained to deliver superlative clinical care, to serve as optometric educators, and to serve the profession of optometry as leaders within the community and health care delivery system.

## AREA OF EMPHASIS

Each primary care resident may select an area of emphasis in which to further his/her clinical knowledge. These may include ocular disease (three positions), cornea and contact lenses (two positions), pediatrics and binocular vision (two positions), and geriatrics and low vision (one position), although the number of positions may change based on interest.

The primary care with emphasis in cornea and contact lens resident spends approximately 50 percent of his/her clinical time in primary care and 50 percent of his/her clinical time in specialty services related to the chosen area of emphasis. External rotations are also arranged with specialists based on the area of emphasis, with the schedule rotating approximately every three-to-four months. The amount of time spent in the area of specialty may vary based on clinical need or between each rotation.

**WEB ADDRESS:**  
<http://optometry.nova.edu/residency/>

**LIKE US ON FACEBOOK:**  
<http://www.facebook.com/nsuoptometricresidency>

**Director of Residency Programs**  
**Program Coordinator**  
Lori Vollmer, O.D., FAAO  
Phone: (954) 262-1452  
Fax: (954) 262-2484  
Email: [lvollmer@nova.edu](mailto:lvollmer@nova.edu)

**Contact Lens Coordinator**  
Andrea Janoff, O.D., FAAO  
Phone: (954) 262-1486  
Email: [janoffa@nova.edu](mailto:janoffa@nova.edu)

**Nova Southeastern University**  
**College of Optometry**  
**3200 South University Drive**  
**Fort Lauderdale, Florida 33328**



### NOTICE OF ACCREDITATION

Nova Southeastern University is accredited by the Southern Association of Colleges and Schools Commission on Colleges to award associate's, baccalaureate, master's, educational specialist, doctorate, and professional degrees. Contact the Commission on Colleges at 1866 Southern Lane, Decatur, Georgia 30033-4097 or call 404-679-4500 for questions about the accreditation of Nova Southeastern University.

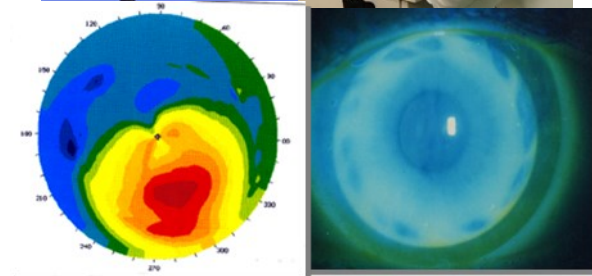
### NONDISCRIMINATION STATEMENT

Nova Southeastern University admits students of any race, color, sex, age, nondisqualifying disability, religion or creed, sexual orientation, or national or ethnic origin to all the rights, privileges, programs, and activities generally accorded or made available to students at the school, and does not discriminate in administration of its educational policies, admissions policies, scholarship and loan programs, and athletic and other school-administered programs.



# OPTOMETRIC RESIDENCY PROGRAM

**Primary Care with  
Emphasis in  
Cornea and Contact Lenses**



## PRIMARY CARE WITH EMPHASIS IN CORNEA & CONTACT LENSES

The Eye Care Institute, with its wide diversity of patients and clinical facilities, serves a large patient base in both the Primary Care and Cornea and Contact Lens Services. This residency program provides advanced clinical training in primary care optometry, as well as focused exposure to advanced corneal and contact lens care. Emphasis is placed on specialty contact lens fitting, including presbyopia, astigmatism, corneal thinning disorders, post-surgical contact lens management, and orthokeratology. Experience is gained through a combination of direct patient care and supervision of students. External clinical rotations in optometric and/or medical subspecialties are also available to the resident.

### CURRICULUM

- supervision of patient care provided by student clinicians
- observation of patient care provided by specialized physicians
- direct patient care in Resident Clinic
- rotating after-hours patient care
- laboratory teaching
- preparation of a paper of publishable quality
- assistance with the preparation of publishable abstracts
- delivery of lectures and grand rounds
- grand rounds at NSU and the Bascom Palmer Eye Institute
- journal review and discussion
- independent study

### PREREQUISITES

All candidates will be considered in a fair and impartial manner. The deadline for applications is February 1st. All candidates wishing to be considered must submit or meet the following criteria:

- current curriculum vitae
- three letters of recommendation
- official transcripts from an ACOE-accredited college of optometry demonstrating a recommended minimum GPA of 2.8 or an average of 82 percent
- passing score on NBEO Part I to be interviewed and passing NBEO Part II/ TMOD to be placed
- completed application form
- ORMatch application
- submit to a personal interview
- obtained a Doctor of Optometry degree from an ACOE-accredited school or college of optometry
- required to take Part III and be license-eligible in the state of Florida or another state to receive a Faculty Certificate
- valid social security number and visa if international prior to beginning program

### PROGRAM LENGTH AND SCHEDULE

The Primary Care Residency is a 12.5-month program. The salary is \$38,000 year. The resident is expected to work up to 5.5 days per week. The clinics are open from 8:30 a.m. to 5:00 p.m. on Monday, Tuesday, Thursday, and Friday. There is evening clinic on Wednesday until 8:00 p.m., and residents will be

assigned to this clinic for portions of the year. All residents are expected to work for part of the year on Saturday, which is a half day, from 8:00 a.m. to about 1:00 p.m. Clinical assignments vary and are determined by the residency director, with assignments rotating every three-to-four months.

### BENEFITS

- professional liability insurance is covered for patient care provided at NSU clinical sites.
- health and dental insurance will be provided commensurate to faculty coverage.
- leave will consist of 5.5 vacation days, 3 personal days, 5 sick days, and 10 professional development days to attend conferences.
- a travel stipend will be provided to attend professional conferences.
- business cards and clinic jackets will be provided for each resident.
- residents may enroll in the on line NOVA Masters in Clinical Vision Science with tuition waiver during the year of residency, though student activity fees must still be paid by the resident.

### COMPLETION REQUIREMENTS

- Satisfactory evaluations
- complete a manuscript of publishable quality
- attend all assigned conferences
- Prepare and deliver grand round presentations/lectures
- attend all scheduled clinical assignments
- complete all patient, didactic, and scholarship logs
- attend the minimum number (3) of local society meetings